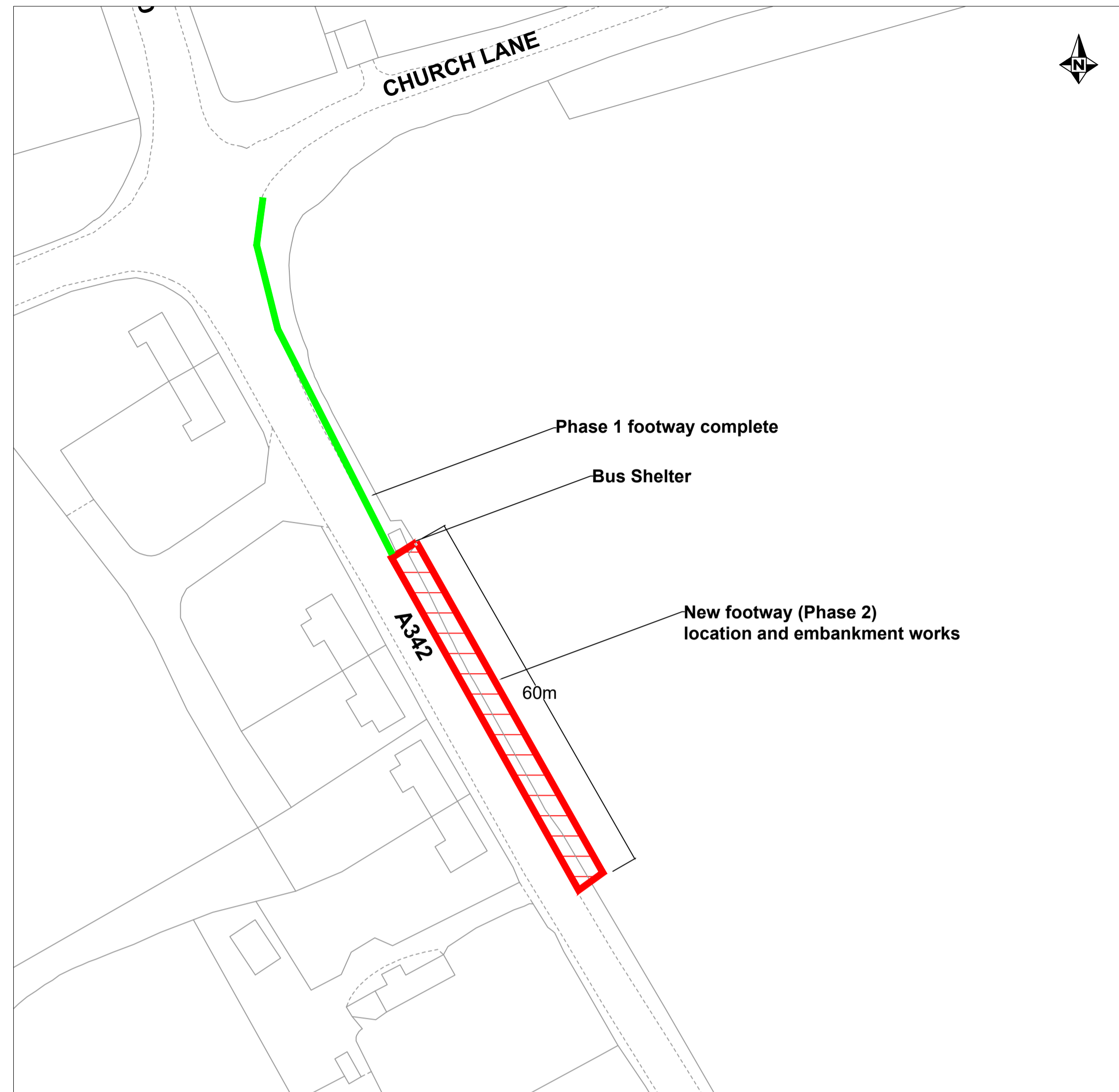
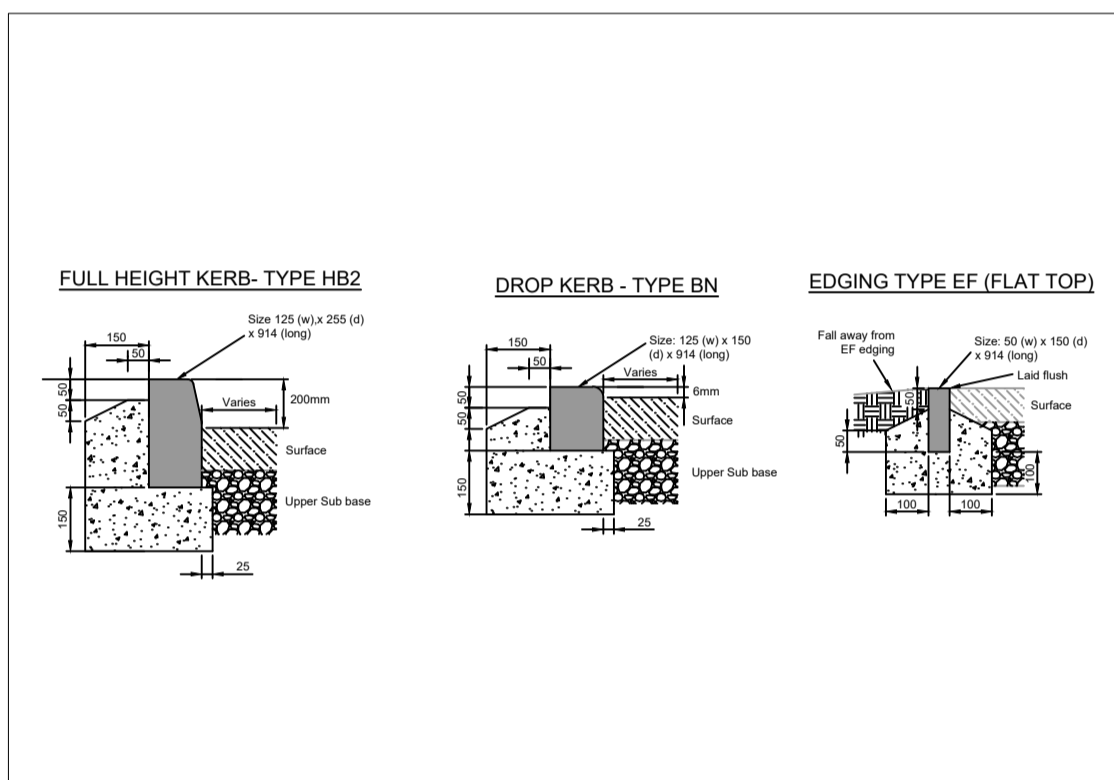
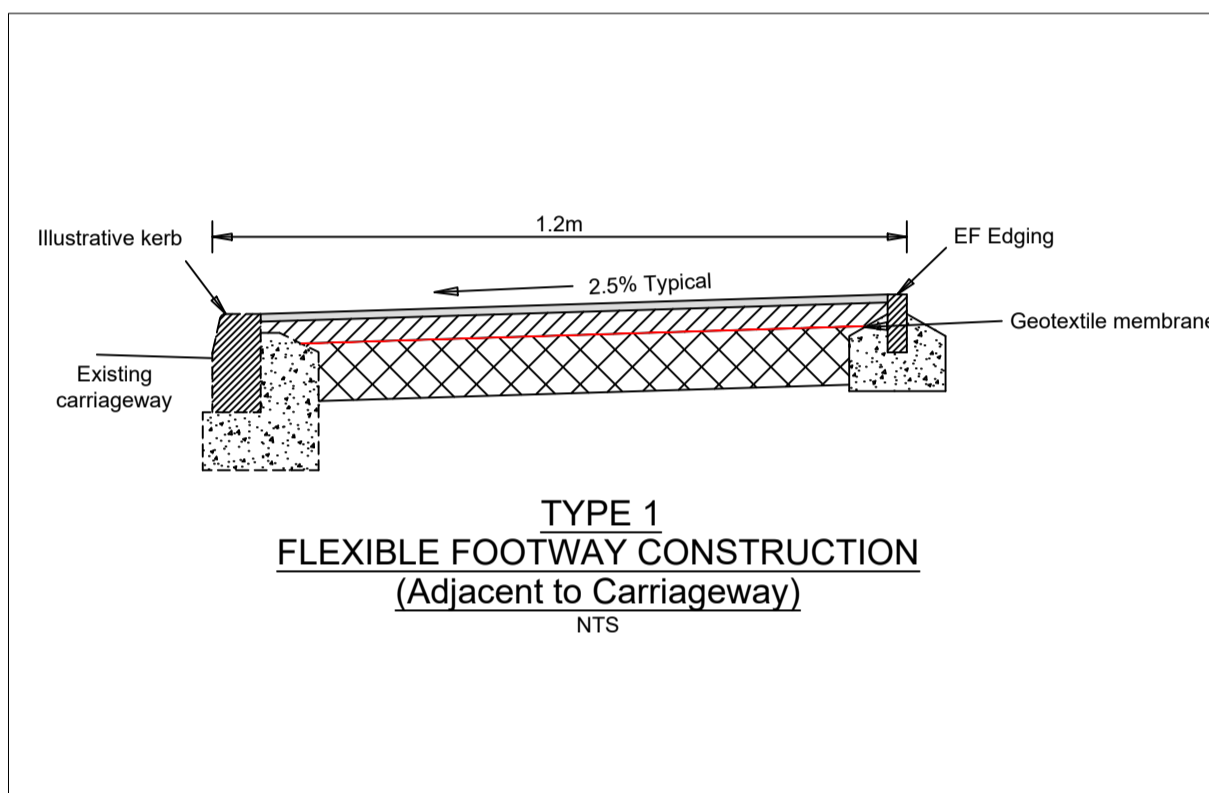


FOOTWAY / CYCLEWAY - FLEXIBLE CONSTRUCTION TABLE SELECTOR			
	FOOTWAY / CYCLEWAY TYPE 1 / 1A	CROSSOVER TYPE 1 (STANDARD)	CROSSOVER TYPE 2 (INDUSTRIAL)
SUB-BASE			
Type 1 / Type 2 (Clause 803)	150 (See Note 5)	225	270
BASE			
32mm Dense Asphalt Concrete Base 40/60 PEN	-	-	100
BINDER COURSE			
20mm AC Dense Surf 40/60 (or 160/220 see note 8)	60	60	60
SURFACE COURSE			
Heavy Traffic Option: HRA 30/10 F Surf 40/60	-	25	25
HRA 45/6 Surf 160/220	-	-	-
ACB Dense Surf 100/150 (or 160/220 see note 8)	20	20	-
10mm Close Graded Asphalt Concrete Surface Course 100/150	-	-	30



- NOTES:
- Do not scale from this drawing.
  - Refer to drawings WC-HCD-1100-D001-0 for Approved Kerb Type Selection.
  - Prior to the commencement of laying the formation shall be treated with an approved residual weedkiller.
  - The engineer may request inclusion of a non-woven separation membrane to mitigate weed/root intrusion.
  - The Engineer may increase the Sub-base to a depth of 225mm or include a geotextile membrane or geo-grid on formation where dictated by existing ground conditions.
  - None of the details on this drawing are suitable where 'no-dig' construction is required.
  - Where a footpath is proposed between walls, private land or other features then positive drainage will be necessary in order to prevent run off of highway surface water.
  - For AC 6 Dense Surf & AC 20 Dense bin, 160/220 may be used if hand laying in winter.
  - The work shown on this drawing could affect statutory undertakers apparatus and they are required to verify the location and depth prior to the commencement of work and take all precautions necessary when working in the vicinity of such apparatus. Utility information is produced from a digital source and no guarantee can be given regarding its accuracy. It is the recipients responsibility to check the accuracy of measurements given. Should discrepancy occur please contact the issuing authority to seek clarification.
  - The use of this drawing does not absolve the client of their responsibilities under Health & Safety: The Construction (Design & Management) Regulations 2015
  - All road markings to be installed in accordance with DFT publication The Traffic Signs Regulations and General Directions 2016 & Chapter 5 of the Traffic Signs Manual (2003)
  - All traffic signs to be installed in accordance with DFT publication The Traffic Signs Regulations and General Directions 2016.



This map is reproduced from Ordnance Survey material with the permission of Ordnance Survey on behalf of the Controller of Her Majesty's Stationery Office © Crown copyright.  
Unauthorised reproduction infringes Crown Copyright and may lead to prosecution or Civil Proceedings.  
Wiltshire Council (100049050) 2022

F					
E					
D					
C					
B					
A					
O	11/22	SLD	GR	MJS	ORIGINAL
REV	DATE	DRAWN	CHECK	APPRV	DESCRIPTION

DRAWING PURPOSE:  
**ISSUE**

**Wiltshire Council**  
Traffic & Network Management  
County Hall, Bythesea Road, Trowbridge  
Wiltshire, BA14 8JD  
Tel: 0300 4560100  
Website: www.wiltshire.gov.uk

PROJECT:  
RUSHALL  
ELM ROW PHASE 2 FOOTWAY

DRAWING TITLE:  
SUBSTANTIVE BID  
PRELIMINARY DESIGN

SCALES:	NOT TO SCALE	SHEET SIZE:	A1
DRAWING No:	2021-059-SLD-RUSH-D005	REVISION:	0
FILE REF:	L:/TET/CATG/PEWSEY		

Phase 1 footway completed 2020-21 Phase 2 to be linked to provide continuous link.

Existing Phase 1 footway to continue along Phase 2 in front of bus shelter providing a continuous footway link.

Existing Phase 1 fence to continue along to Phase 2.

Phase 1 bank re-grading and new trees planted to continue along Phase 2.

